



**Geo-Pol<sup>®</sup>**

Geopolymer System

# Decorative and Architectural Geopolymer panels

Our company worked since 1990 with precast frames as in the picture, made of Portland Concrete.

Our product have a wide range of modulations, resulting in the most creative panels.





# Geo-Pol®

Geopolymer System





We studied the geopolymer since 2000.

Five years ago we made the first frame in geopolymer.

We achieved a workmanship so good that it opened a new market for us.





Four years ago the architectural group from a big church in Brazil contacted us.

They imported blocks from Israel, but there were special parts that they could not make with those blocks.



We started small, with a ventilated block, and our results with Geopolymer to craft these pieces granted more and more space inside the project.



The ventilated block has the texture and the color from the Israel block on both sides.

The block dimension is 50cm x 25cm x 25cm



In this picture we can see three parts made of Geopolymer, the “crowning” parts, the Capitel of the column and Cornice, the step shaped part





We can see the crowning and the cornice in more details. The crowning is segmented in 16 ornaments and the cornice is divided in two 3 stepped parts.



There are two groups of cornice surrounding the temple, the upper and the lower cornice. The Capitels are divided in 10 precast parts.





These are the outer column base. It is segmented in 10, and each segment is a set of two parts, a “M” shaped and a “L” shaped part.



All outer windows have this frame, the inner face and the boards have the texture of the Israel blocks.



Here is the first part, the ventilated block and the cornice right above.



Venezians for the garage ventilation. These are line of production blocks, all other were precast under mesure.



The last of the outside work, boards for ending purposes, with the texture requested.



This is the sequence of setting the inner column base. It is segmented each 1 meter and it has pigment on the geopolymer mixture. Inside the temple there are 24 inner columns, unfortunately we weren't allowed to take pictures of the hall.





Also to match the columns color, the baseboard that surrounds the main hall.



Another detail, this is a tombstone outside the temple and there is a small cornice surrounding it.



Entrance portic of the temple. Here we have “L” shaped parts making the stepped effect.





**Geo-Pol**<sup>®</sup>

Geopolymer System





**Geo-Pol**<sup>®</sup>

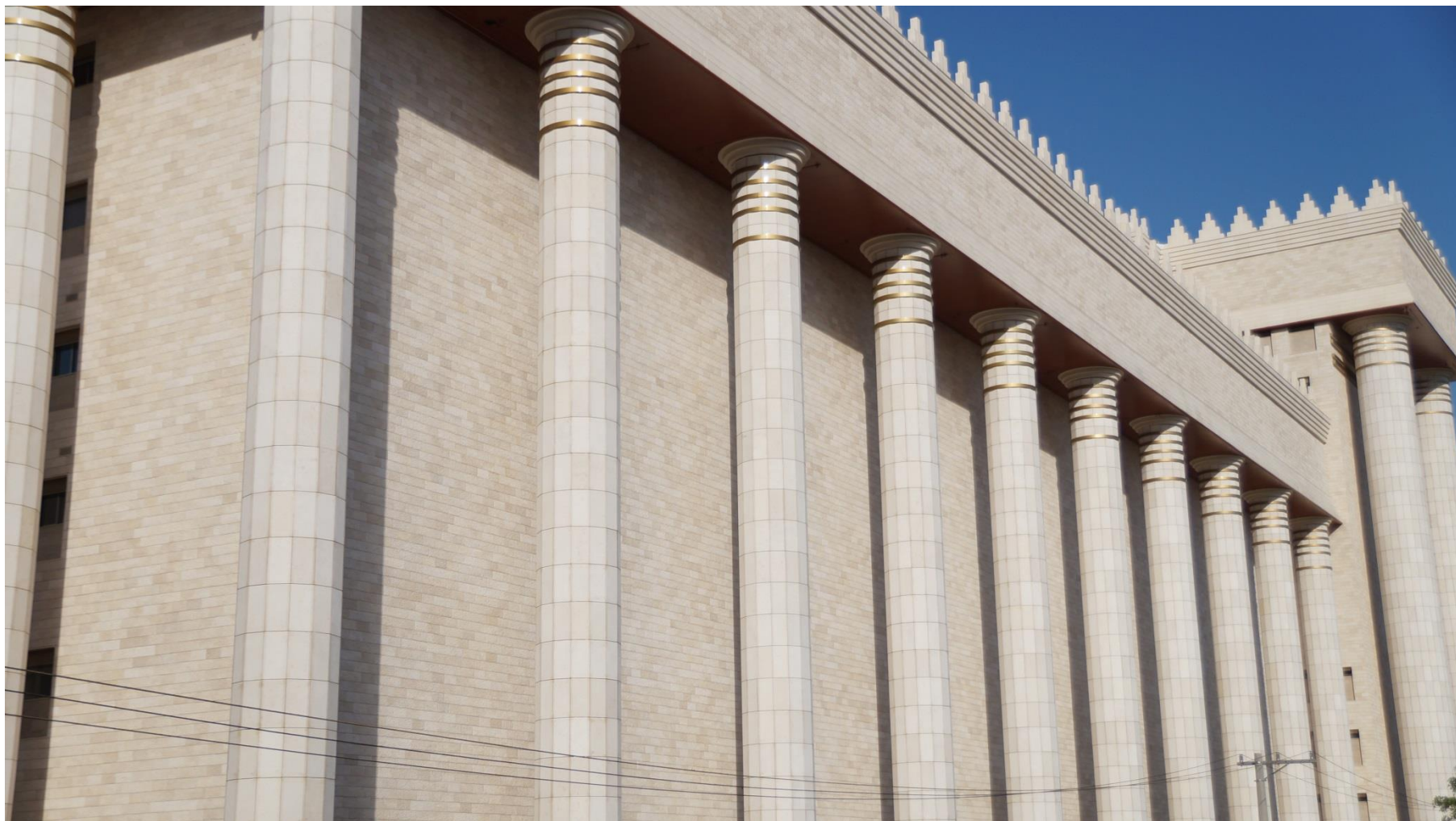
Geopolymer System





**Geo-Pol**<sup>®</sup>

Geopolymer System













This is a restaurant in São Paulo. It is a precast of one square meter and the repetition of the pattern gives us a awesome façade.

Geopolymer gave us the ability to play with shapes and still have a good workmanship.







**Geo-Pol**<sup>®</sup>

Geopolymer System



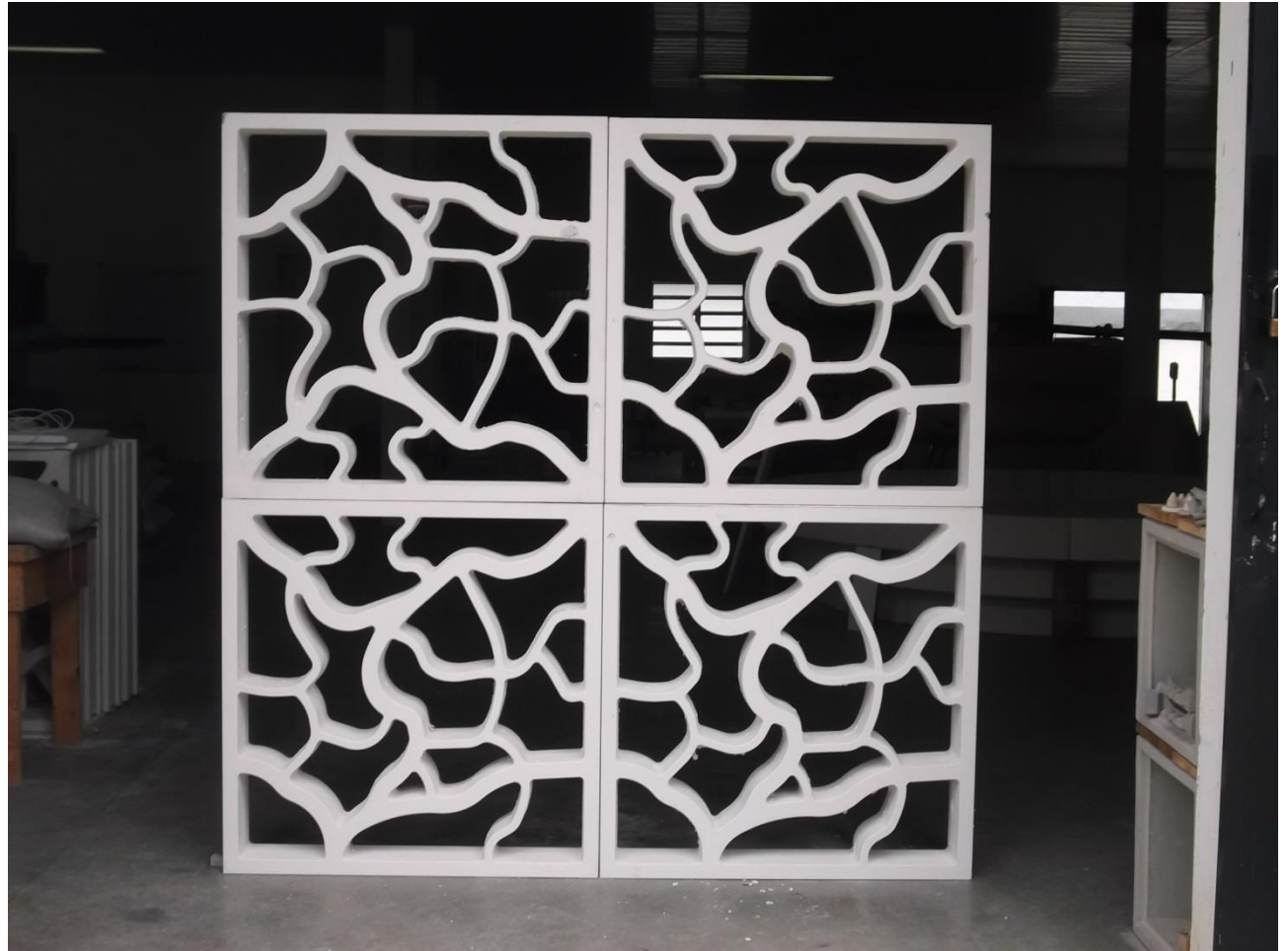


**Geo-Pol**<sup>®</sup>

Geopolymer System



This piece is for the museum Luiz Gonzaga in Northwest Brazil. It's shape make us remember the trees of the native rainforest in the Brazilian shore.











**Geo-Pol<sup>®</sup>**

Geopolymer System



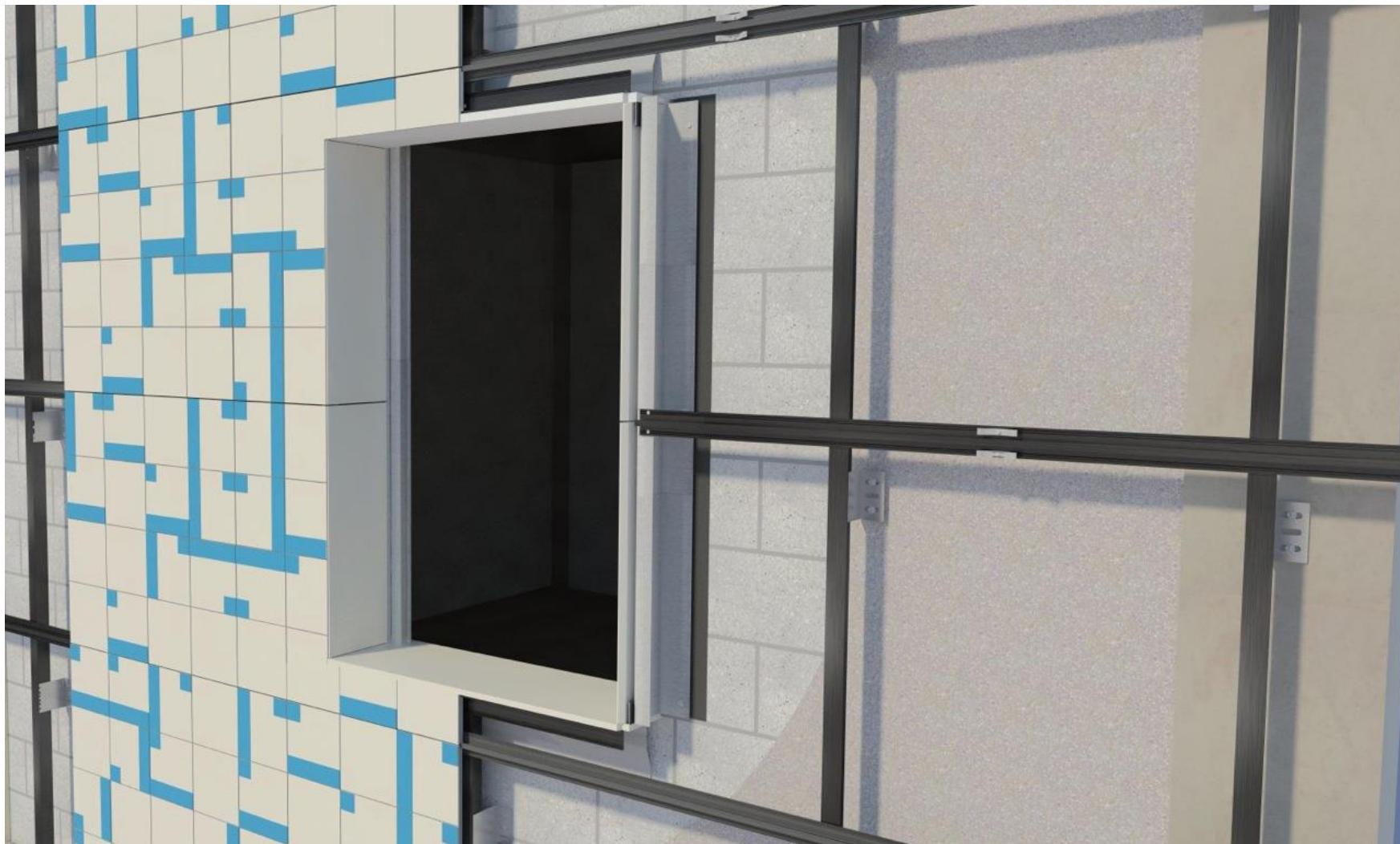


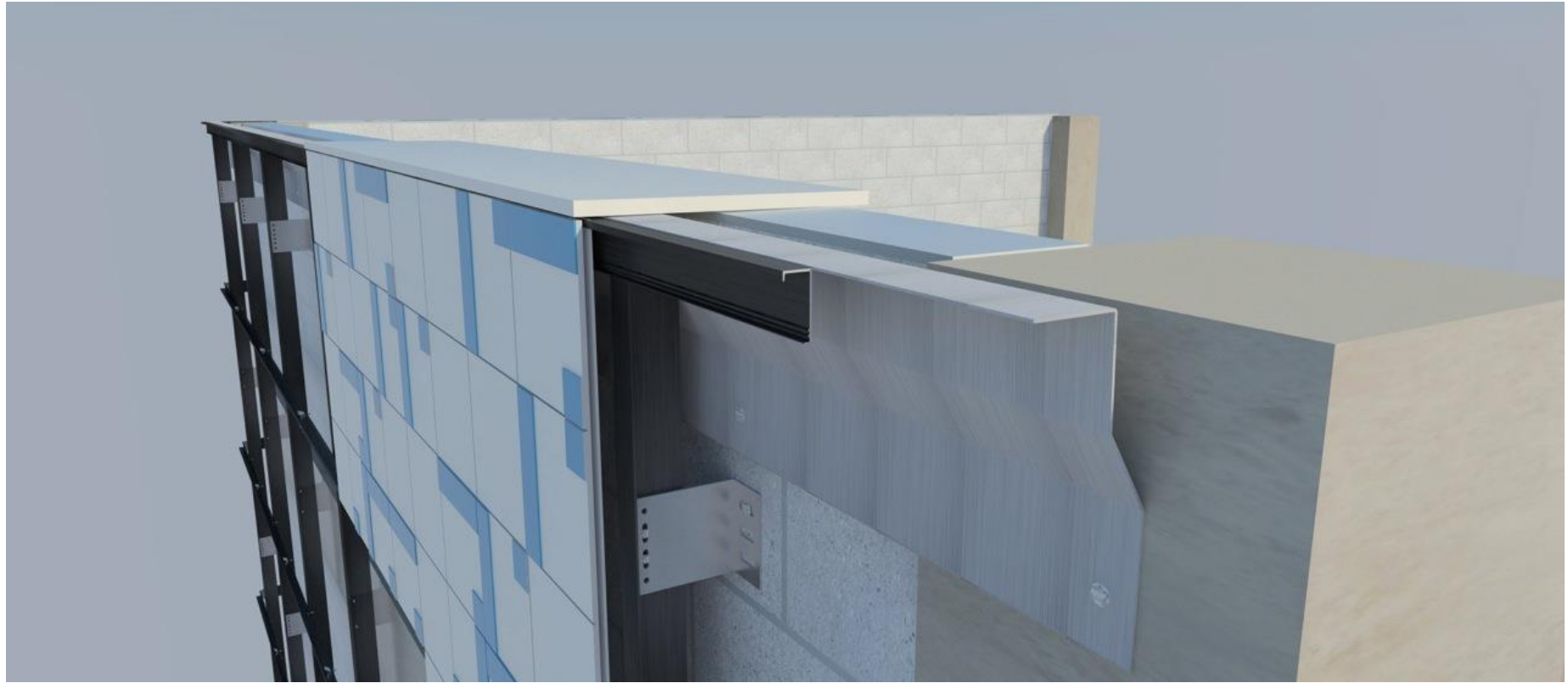


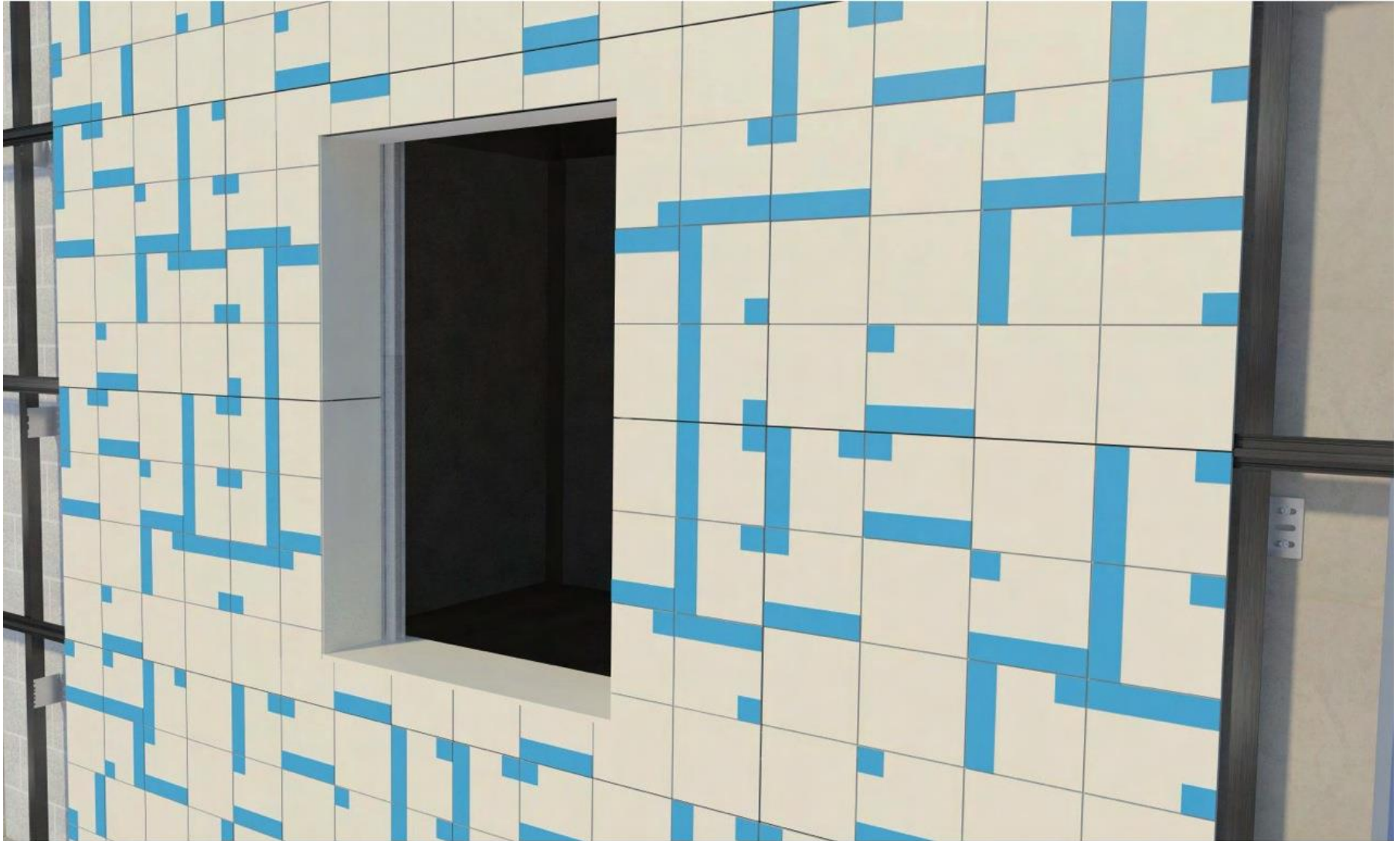
Ventilated Façade. This is a bicolour board, 1,5cm depth. It's shape is to recreate the effect of tiles, once the brazilian law does not allow tiles to be grouted in the external façade of any building











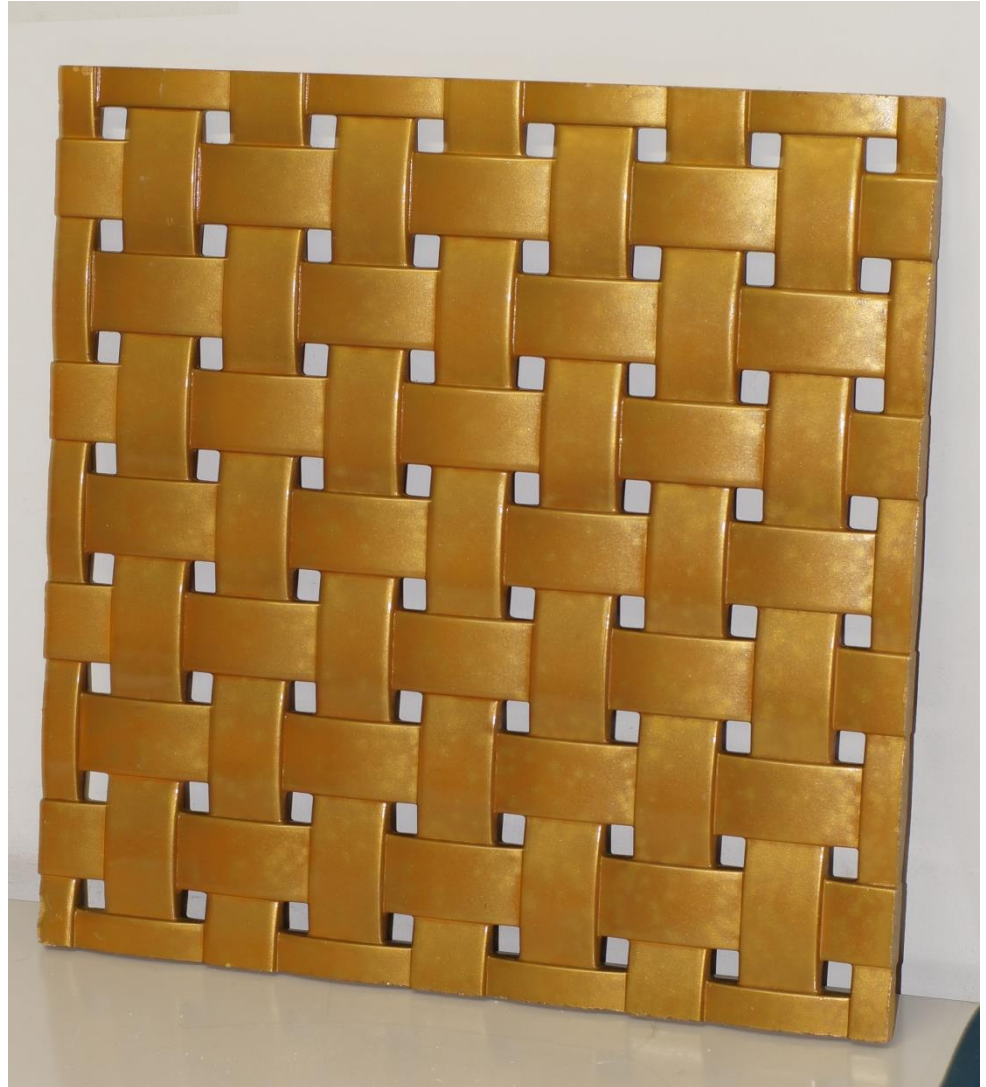




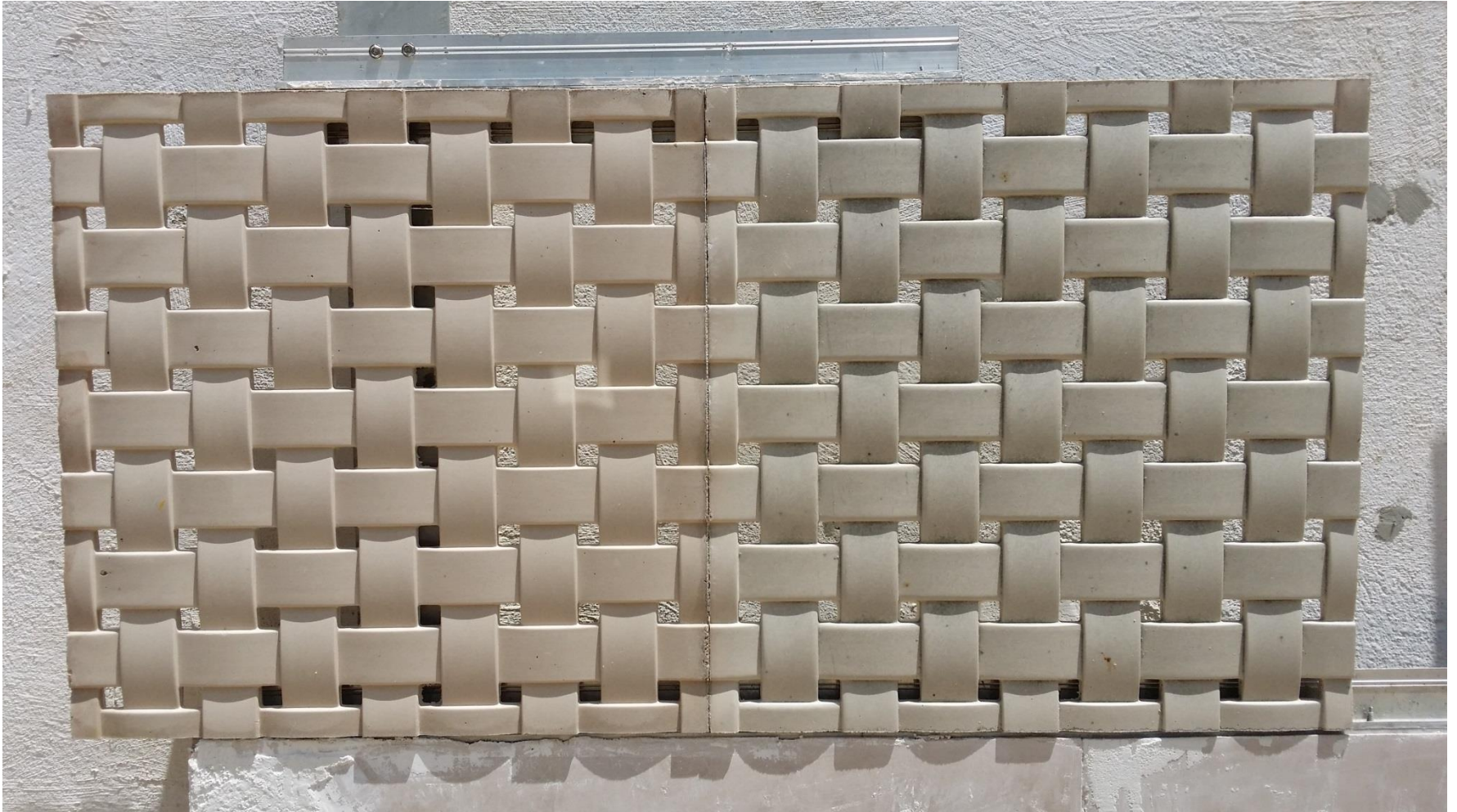
**Geo-Pol**<sup>®</sup>

Geopolymer System

This is also a piece to ventilated façade. It is the most complex shape we made with geopolymer. Also we applied car painting on the piece to have a different color and effect on the façade.



Here we can see the continuous effect. This is the natural colour.



Draining blocks with high resistance for vehicular traffic and different colours to select.





**Roni Martins Schmeling**

info@geopolymer.com.br

cel.: (11) 99881-9369

**WINCRET DESIGNER CONCRETE PRODUCTS LTDA**

<http://www.geopolymer.com.br>

Fone: (11) 5543-2788

Fax: (11) 5535-9207



**Wytsei K. Schmeling**

wytsei@geopolymer.com.br

**WINCRET DESIGNER CONCRETE PRODUCTS LTDA**

<http://www.geopolymer.com.br>

Fone: (11) 5543-2788

Fax: (11) 5535-9207